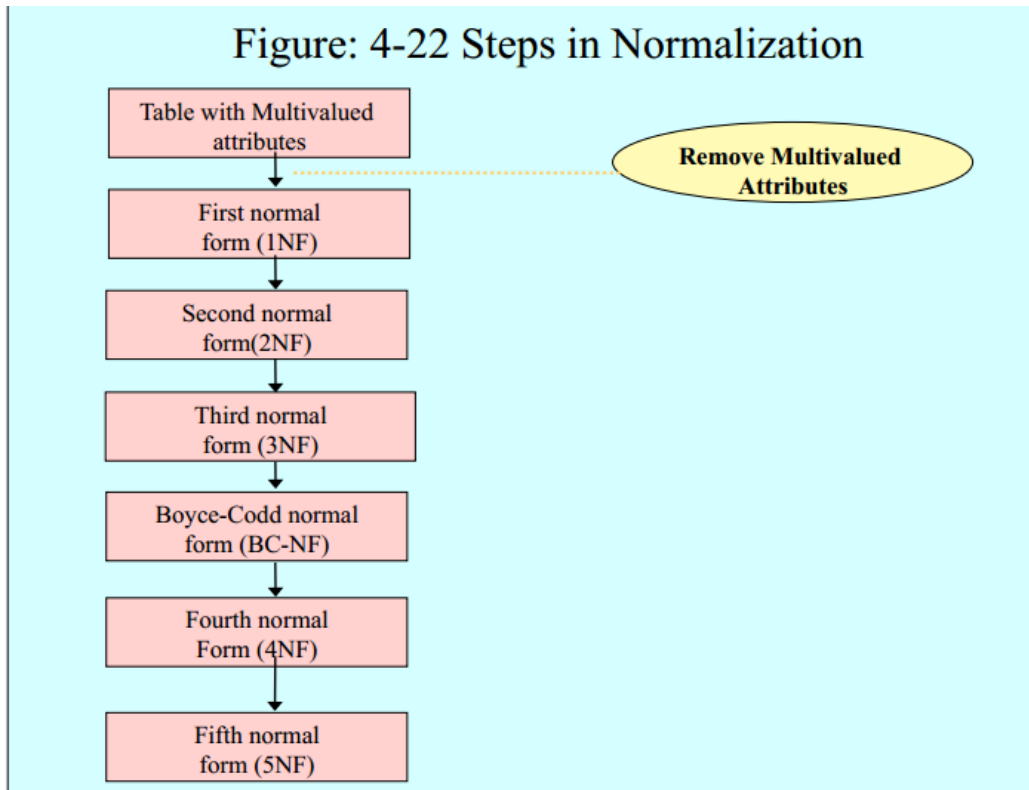


## First Normal Form (1NF)

- Only atomic attributes (simple, single-value)
- A primary key has been identified
- **Every relation is in 1NF by definition**



StudentId	StuName	CourseId	CourseName	Grade
100	Mike	112	C++	A
100	Mike	111	Java	B
101	Susan	222	Database	A
140	Lorenzo	224	Graphics	B