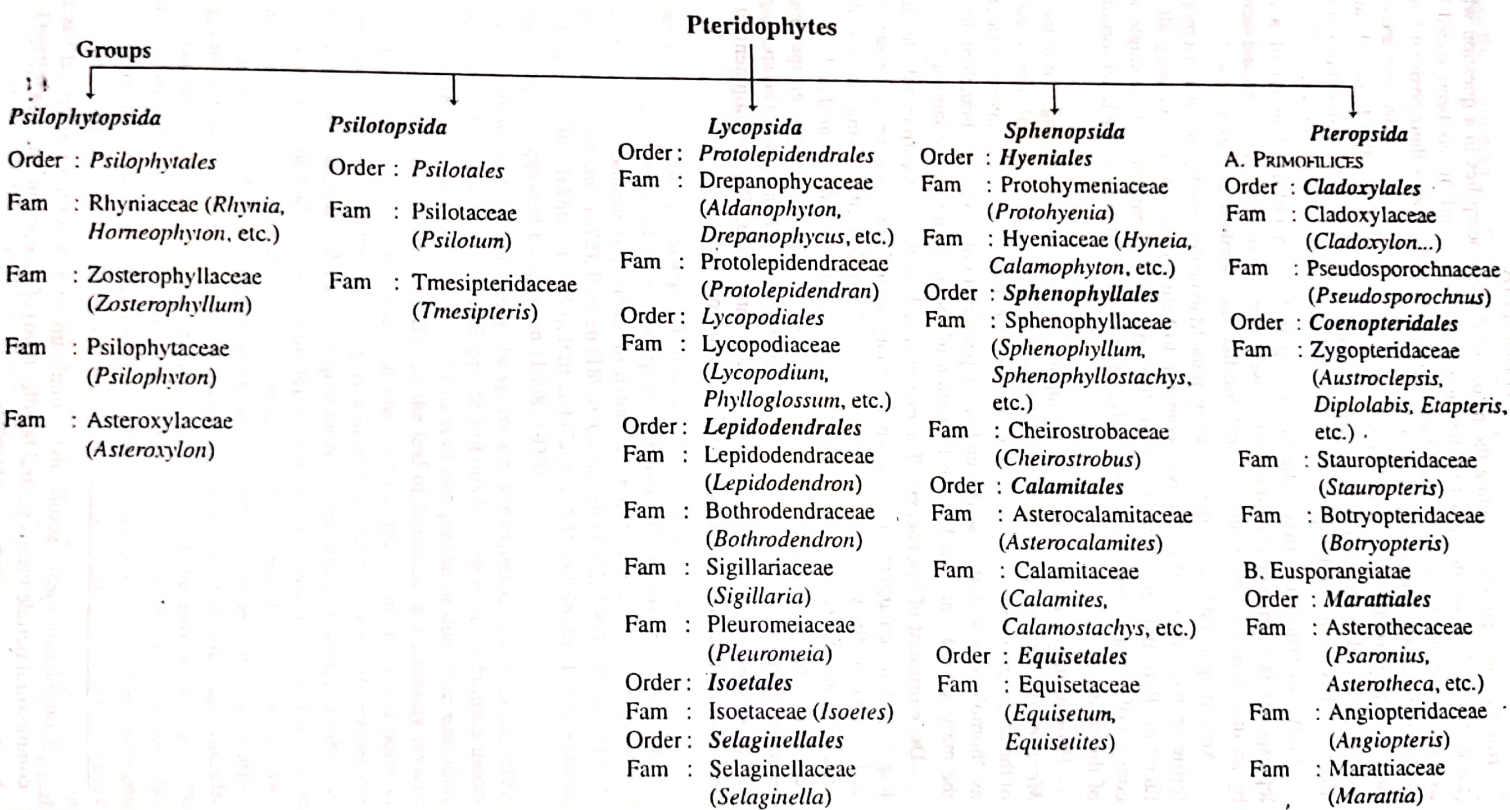


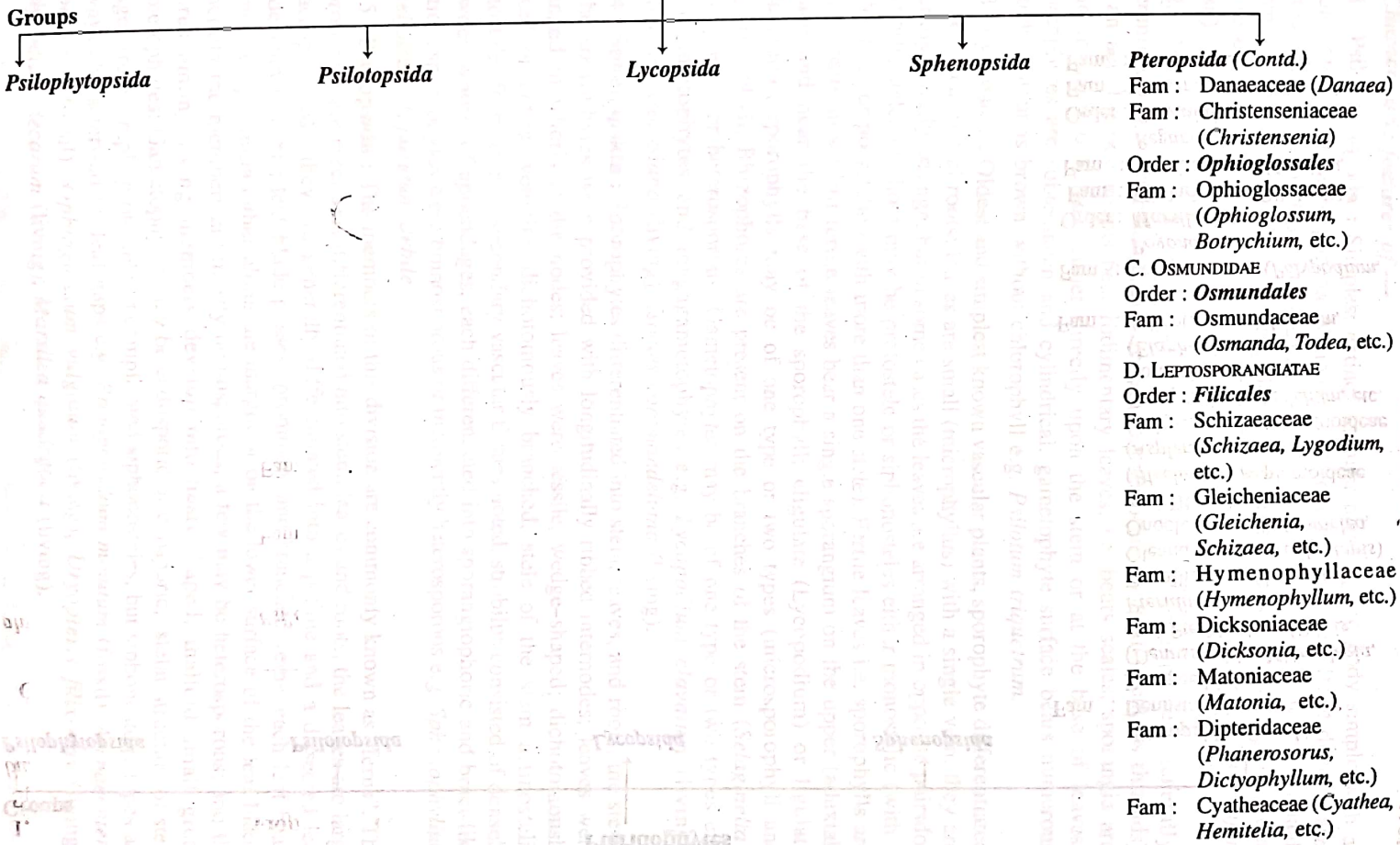
PTERIDOPHYTA

1. Classification of Pteridophytes according to Sporne (1966) :-

Sporne's scheme of the classification of Pteridophyta is mainly the same as that proposed by Reimers in the 1954 edition of Engler's *Syllabus der Pflanzenfamilien*.



Pteridophytes



Pteridophytes

Groups

Psilophytopsida

Psilotopsida

Lycopsida

Sphenopsida

Pteropsida (Contd.)

- Fam : Dennstaedtiaceae
Dennstaedtiaceae
(*Dennstaedtia*, *Microplegia*, etc.)
- Pteridoideae (*Pteris*, *Pteridium*, etc.)
- Davallioideae (*Davallia*)
- Oleandroideae (*Nephrolepis*)
- Onocleoidae (?) (*Onoclea*, etc.)
- Blechnoideae (*Blechnum*), Asplenioidae (*Asplenium*), Athyrioideae (*Athyrium*), Dryopteridoideae (*Dryopteris*, *Polystichum*, etc.)
- Lomaniopsidoideae (*Elaphoglossum*)
- Fam : Adiantaceae (*Adiantum*, *Pellaea*, etc.)
- Fam : Polypodiaceae (*Polypodium*, *Pogonatum*, etc.)
- Order : **Marsileales**
- Fam : Pilulariaceae (*Pilularia*)
- Fam : Marsileaceae (*Marsilea*, *Regnellidium*, etc.)
- Order : **Salviniales**
- Fam : Salviniaceae (*Salvinia*)
- Fam : Azollaceae (*Azolla*)